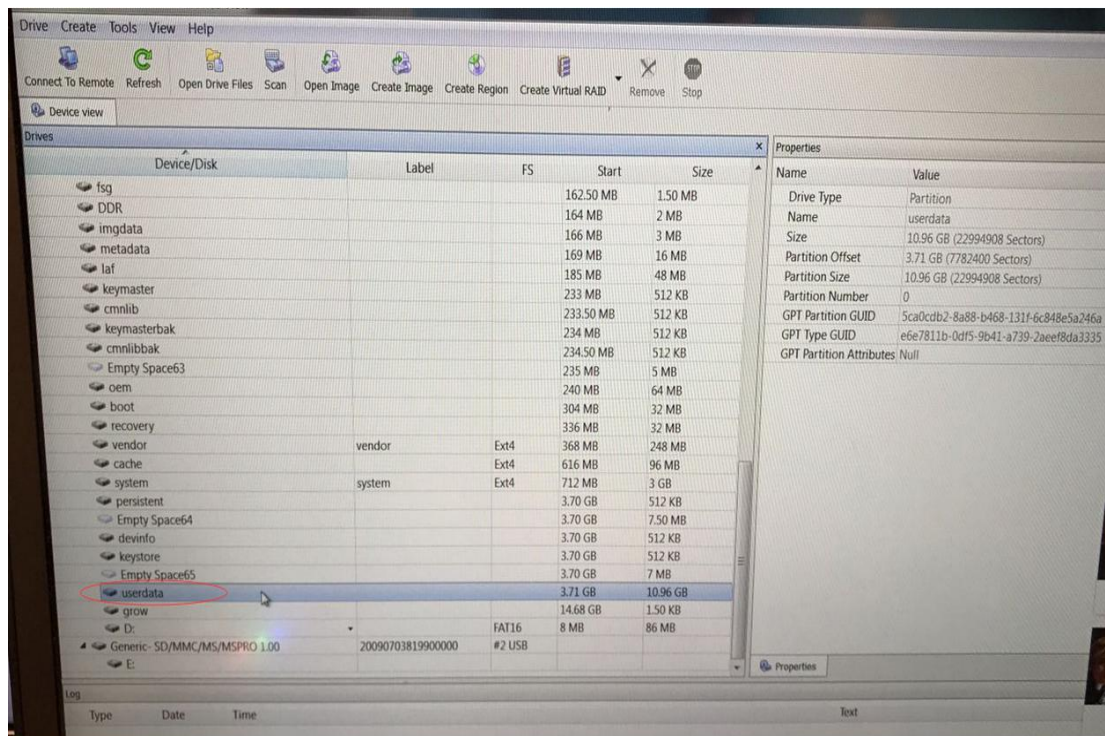


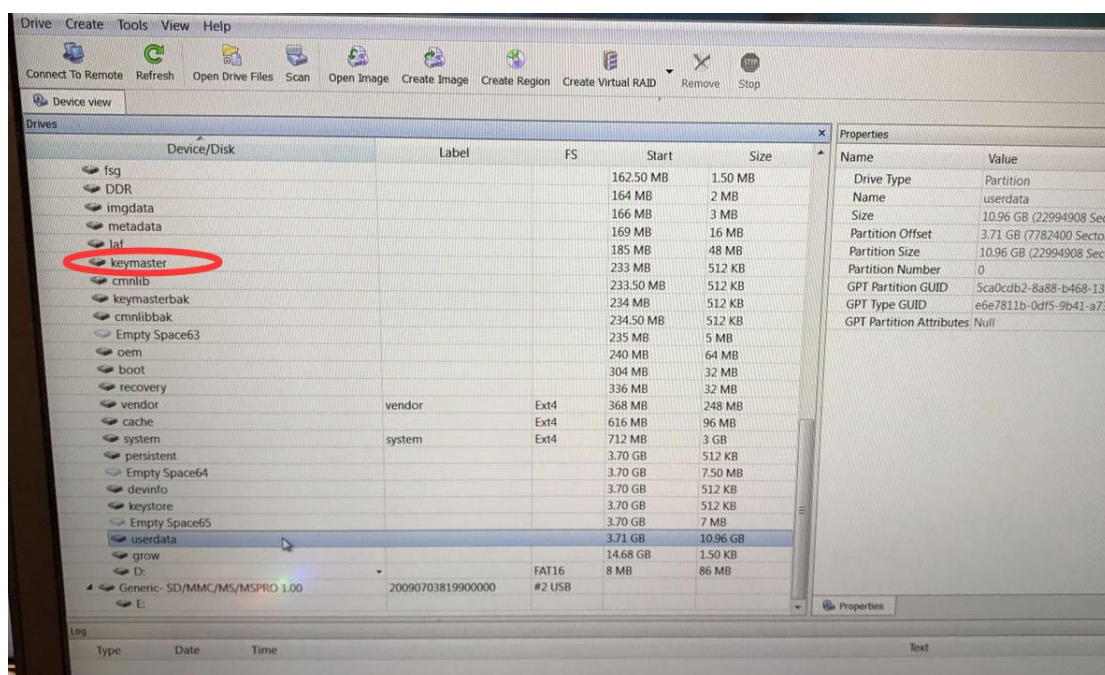
R-Studio Data Software--Crack Version (Creak Version works with windows 7 or 8, Window10--need to install the original one)



Option 1: **Scan userdata partition**

in the R-studio, the contacts, sms photos are stored in the **userdata** partition, scan and copy the data.

NB: **also copy the keymaster partition**, If the chip is encrypted, it need the decrypt keys to read contact2.db file, Message.db in SQ lite viewer

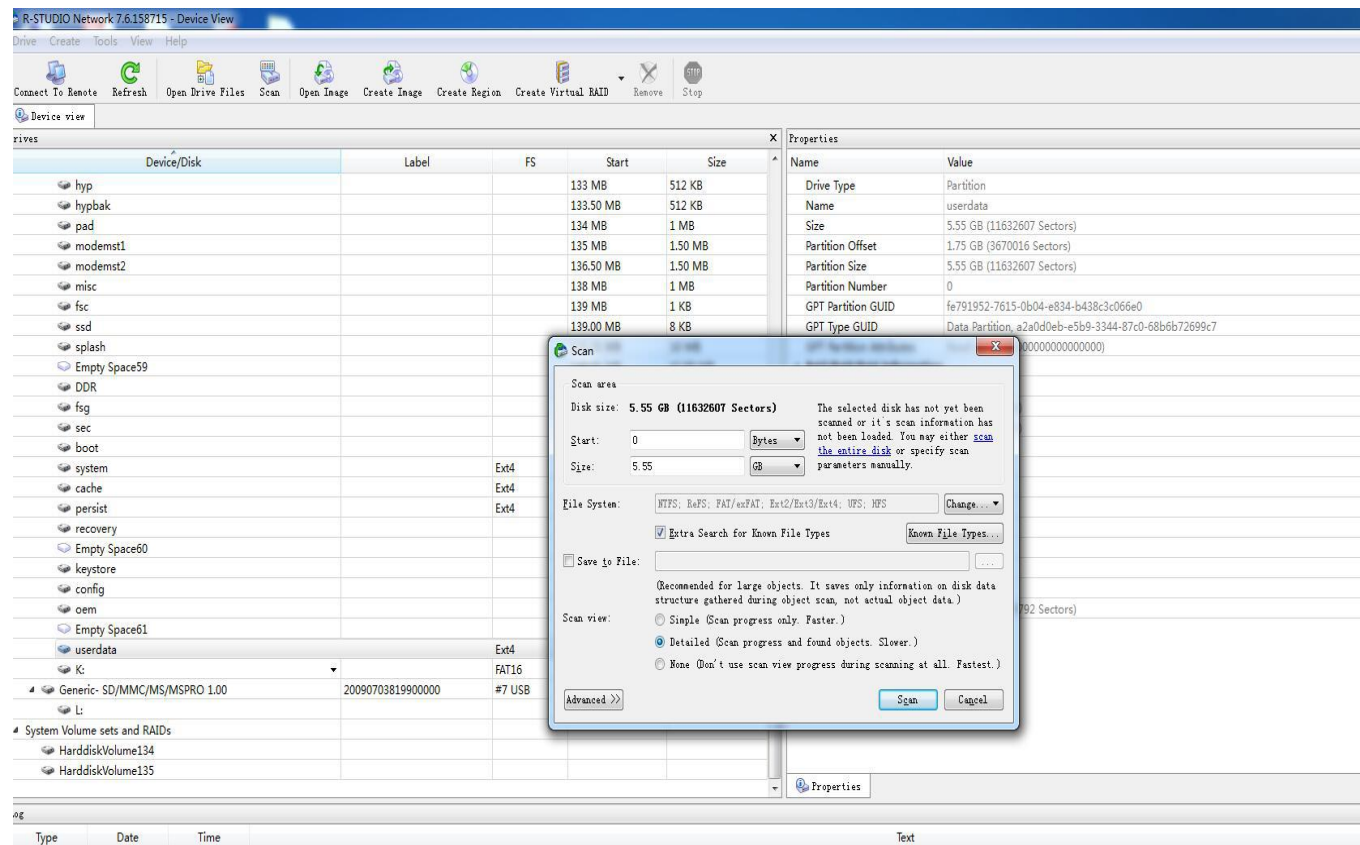


## Option2--

- A. Full scan the whole chip(click the scan option in R-studio)
- B. All partitions will be showed up after scanning is finished.

## Recover data from "userdata"

### 1. Scan userdata partition



2. When scanning is finished, double-click "Recognized0", u will see many data folder

R-STUDIO Network 7.6.158715 - Device View

Drive Create Tools View Help

Connect To Remote Refresh Open Drive Files Scan Open Image Create Image Create Region Create Virtual RAID Remove Stop

Device view

Device/Disk	Label	FS	Start	Size
about			129 MB	1 MB
aboutbak			130 MB	1 MB
rpm			131 MB	512 KB
rpmbak			131.50 MB	512 KB
tz			132 MB	512 KB
trbak			132.50 MB	512 KB
hyp			133 MB	512 KB
hypbak			133.50 MB	512 KB
pad			134 MB	1 MB
modemst1			135 MB	1.50 MB
modemst2			136.50 MB	1.50 MB
misc			138 MB	1 MB
fsc			139 MB	1 KB
ssd			139.00 MB	8 KB
splash			139.01 MB	10 MB
Empty Space59			149.01 MB	42.99 MB
DDR			192 MB	32 KB
fsg			192.03 MB	1.50 MB
sec			193.53 MB	16 KB
boot			193.55 MB	32 MB
system		Ext4	225.55 MB	1 GB
cache		Ext4	1.22 GB	320 MB
persist		Ext4	1.53 GB	32 MB
recovery			1.56 GB	32 MB
Empty Space60			1.60 GB	30.45 MB
keystore			1.62 GB	512 KB
config			1.63 GB	32 KB
oem			1.63 GB	64 MB
Empty Space61			1.69 GB	63.47 MB
userdata		Ext4	1.75 GB	5.53 GB
Recognized0		Ext4	0 Bytes	5.53 GB

Scan Information

userdata - 5.05 GB (1060894704 Bytes, 11632607 Sectors) 3000 Sectors per block

Used

XTFS Boot Sectors 0

PAT Table Entries 9

IFS/IFS SuperBlock 0

Specific File Documents 0

Unrecognized

XTFS Restore Points 0

PAT Directory Entries 0

IFS/IFS CylinderGroup 0

XTFS NTFS File Entries 0

NTFS Boot Sectors 0

NTFS/NTFS VolumeHeader 0

Log

Type	Date	Time	Text
System	2017/3/30	14:52:27	Scan has been completed for userdata in 1m 13s

R-STUDIO Network 7.6.158715 - Device View

Drive Create Tools View Help

Connect To Remote Refresh Open Drive Files Scan Open Image Create Image Create Region Create Virtual RAID Remove Stop

Device view

Device/Disk	Label	FS	Start	Size
pad			134 MB	1 MB
modemst1			135 MB	1.50 MB
modemst2			136.50 MB	1.50 MB
misc			138 MB	1 MB
fsc			139 MB	1 KB
ssd			139.00 MB	8 KB
splash			139.01 MB	10 MB
Empty Space59			149.01 MB	42.99 MB
DDR			192 MB	32 KB
fsg			192.03 MB	1.50 MB
sec			193.53 MB	16 KB
boot			193.55 MB	32 MB
system		Ext4	225.55 MB	1 GB
cache		Ext4	1.22 GB	320 MB
persist		Ext4	1.53 GB	32 MB
recovery			1.56 GB	32 MB
Empty Space60			1.60 GB	30.45 MB
keystore			1.62 GB	512 KB
config			1.63 GB	32 KB
oem			1.63 GB	64 MB
Empty Space61			1.69 GB	63.47 MB
userdata		Ext4	1.75 GB	5.53 GB
Recognized0		Ext4	0 Bytes	5.53 GB

Extra Found Files

Device/Disk	Label	FS	Start	Size
K:		FAT16	64 MB	64 MB
Generic- SD/MMC/MS/MSPRO 1.00	20090703819900000	#7 USB		
L:				

System Volume sets and RAID:

Device/Disk	Label	FS	Start	Size
HarddiskVolume134				
HarddiskVolume135				

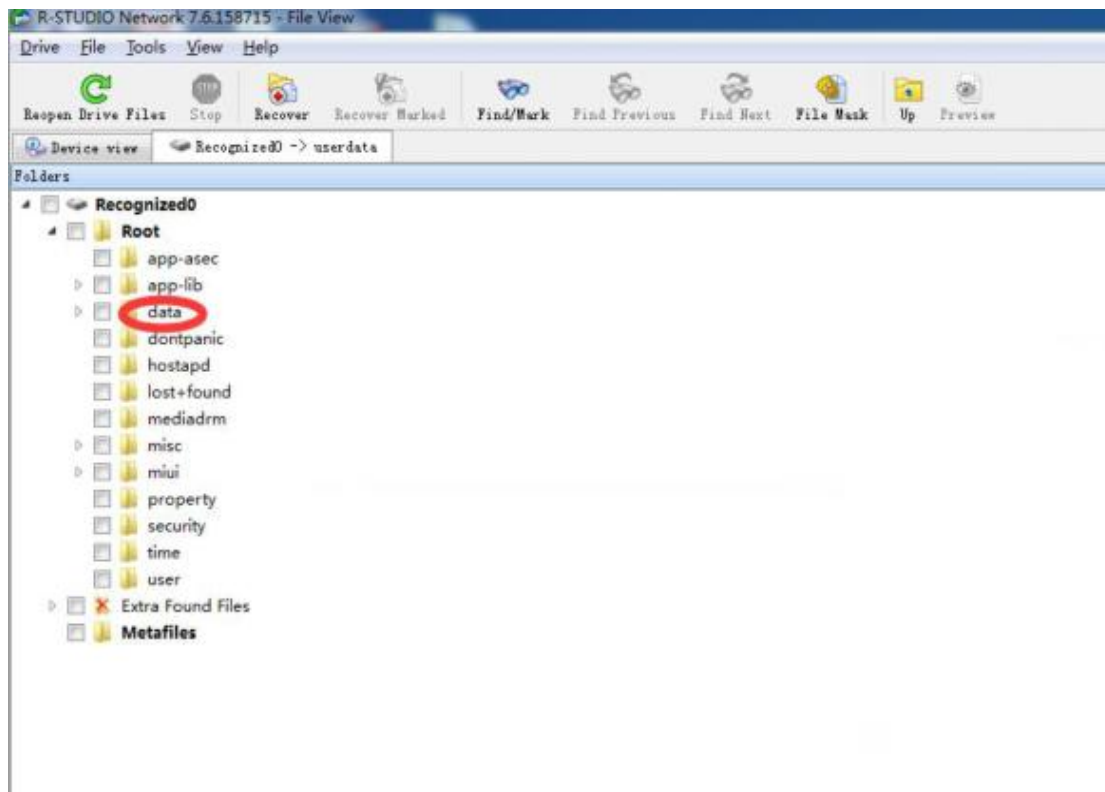
Properties

Name	Value
Drive Type	Partition
Name	Recognized0
Size	5.53 GB (11632607 Sectors)
Partition Offset	0 Bytes
Partition Size	5.53 GB (11632607 Sectors)
Recognized FS	
Parsed Boot Records	6
Parsed Directory Entries	6
Estimated Files Count	13681
Estimated Size	5.53 GB (11599792 Sectors)
Ext2/Ext3/Ext4 Information	
FS Character Set	Utf8
Block Size	4 KB (8 Sectors)
First SuperBlock Offset	1 KB (2 Sectors)
Blocks Per Volume	1449974
INodes Per Volume	362880
Creator OS	Linux
Major Version	1
Minor Version	0
Last Mount Time	
Last Write Time	
Last Check Time	
Volume Size	5.53 GB (11599792 Sectors)

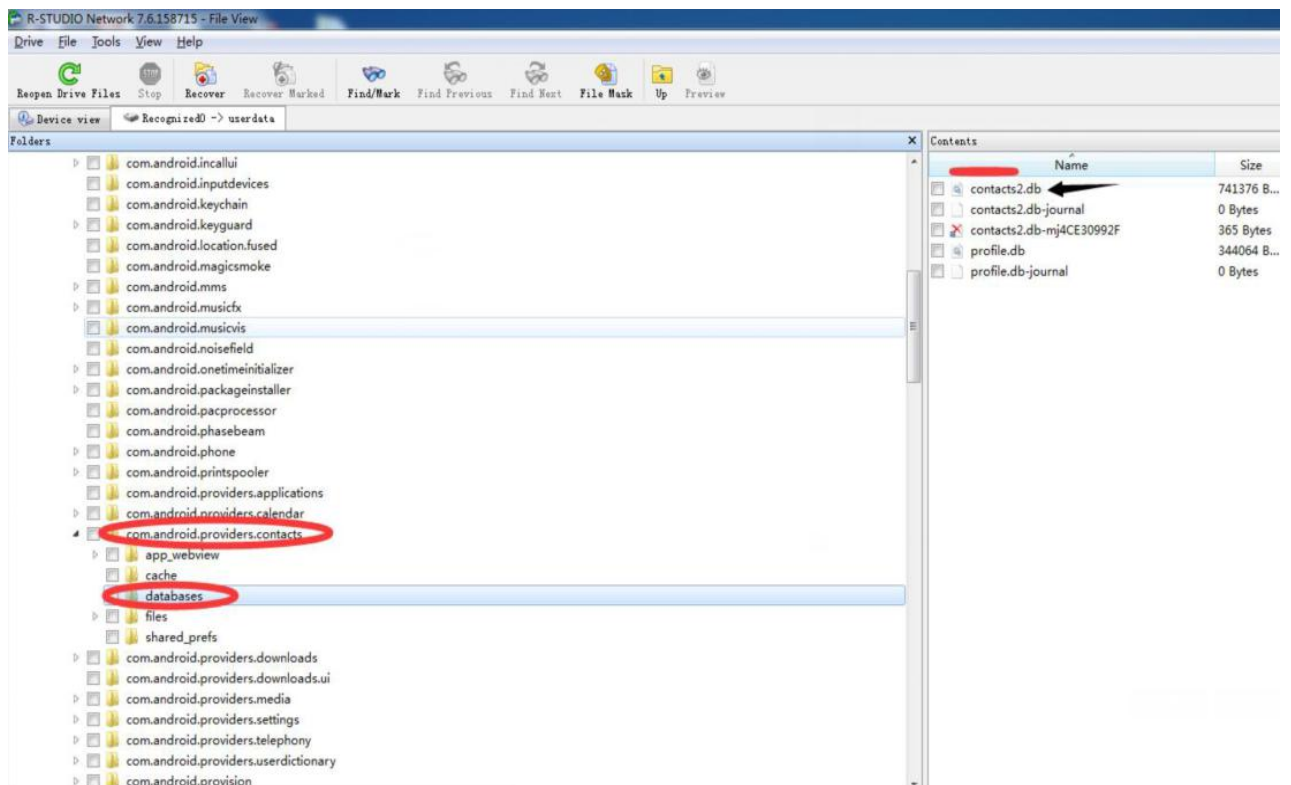
Log

Type	Date	Time	Text
System	2017/3/30	14:52:27	Scan has been completed for userdata in 1m 13s

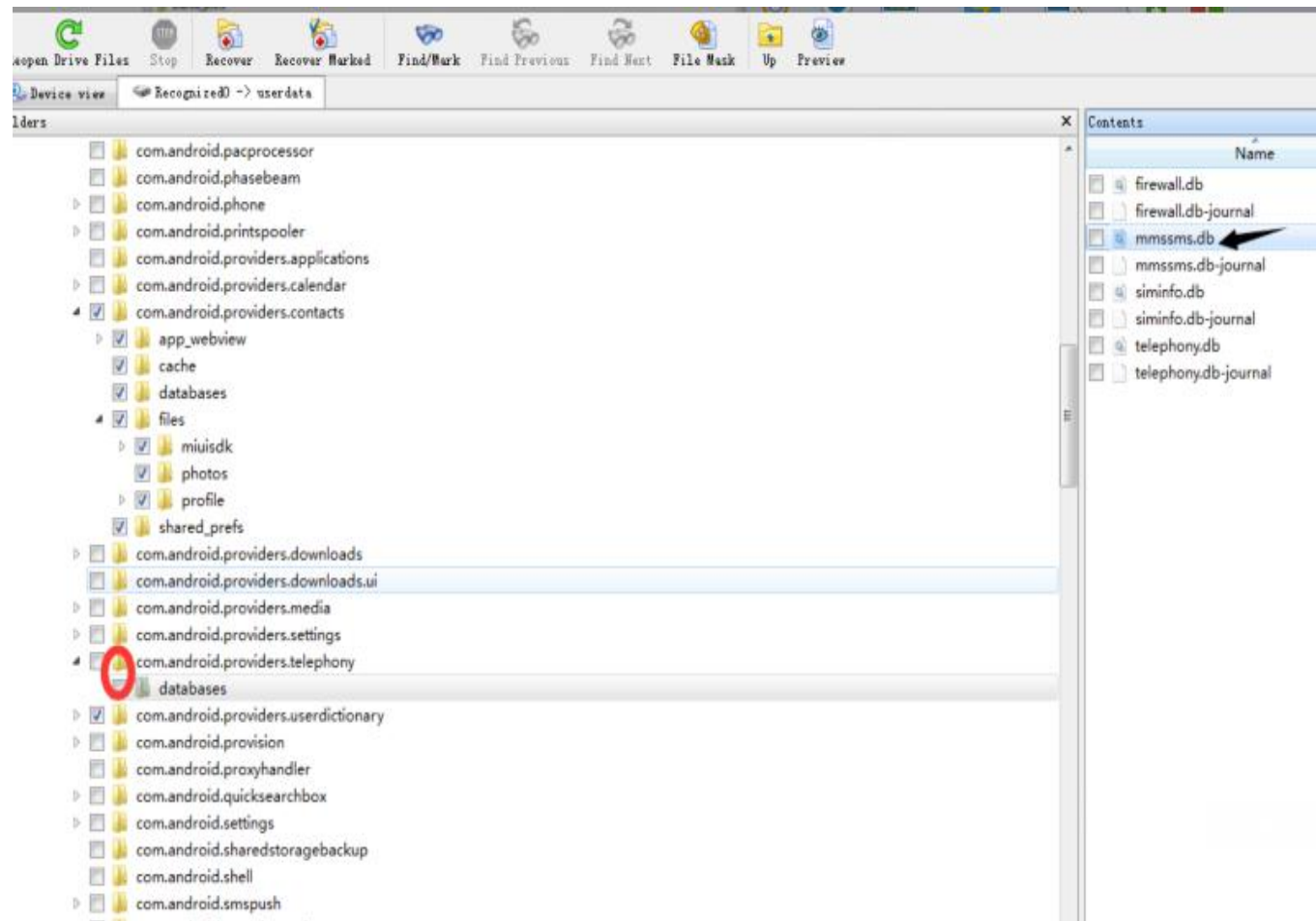




3. Check "com.android.providers.contacts" file for the CONTACT DB Format



#### 4. "com.android.providers.telephony" file for MMSSMS.DB



The same go with Photos and videos

For more questions, pls contact us

Email: [diann@allsocket.com](mailto:diann@allsocket.com)